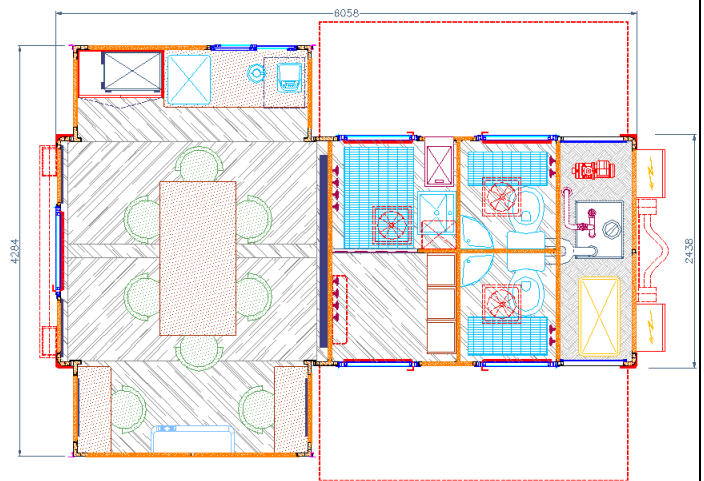


DATA SHEET 24.14



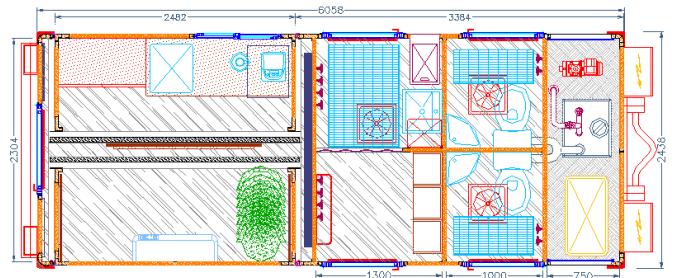
View of the entrance of the meeting room – with extended side bodies

Top view in operating position "extended"



Front view of equipment area and awnings for toilet and changing area

Top view "closed" = 20" container dimensions plus roll-off subframe



2-side expandable multifunctional unit „AB command unit/hygiene” with changing room, washbasin and toilets

**MOD. CON20A-2GV-PFBG-PCDB-21-1**

- |   |   |
|---|---|
| <p>a) Robust supporting structure made of aluminum profiles with welded corner blocks according to ISO standard 20'-1C (or 1CC).</p> <p>b) Can be transported with normal vehicles, in addition to international standards (container ships, freight trains, container carrier vehicles, etc.) or screwed to unwinding subframes for hook unwinding systems in accordance with DIN 30722.</p> <p>c) Flooring made of vinyl in the lounge area and/or stainless-steel floor in the changing area and toilet, firmly glued and sealed to a waterproof multi-ply wood support, foldable floor elements for volume expansion and closure of the lounge area.</p> <p>d) The wall surfaces are smooth sandwich insulation panels with 40mm thick insulation and 1mm thick aluminum panels inside and out, all perfectly sealed.</p> <p>e) Division of the room volume into different areas: stay, hygiene (changing room/washbasin and 2 toilets) plus an equipment compartment for the sanitary facility.</p> <p>f) <b>The common area can be extended on both sides of the central body on self-supporting telescopic guides and equipped with furniture. The sanitary areas are separate cabins with separate entrances.</b></p> <p>g) Aluminum frame windows and security glazing and doors with panic bar.</p> <p>h) Access at the rear for the common area and on both sides for the sanitary areas; a window on the left in the meeting area; roof hatches for each individual cabin; Aluminum shutters on both sides for equipment room.</p> <p>i) Deployment both on board the vehicle and on the ground, with separate request for access stairs and/or entrance platforms.</p> <p>j) Insulated and equipped front equipment compartment, accessible via two side vertical aluminum shutters.</p> <p>k) Compartment that can be equipped either as a toilet or as a storage room (on request).</p> <p>l) Rear, hinged entrance cover with blue light and rear lighting (according to StVO) on request. Platforms/staircases for easy access to premises.</p> <p>m) Painting and finishing on request, individual foil markings and lettering on request.</p> <p>n) Dimensions "closed": L.6058 x W.2438 x H.2591mm (ISO 20'-1CC other heights on request), dimensions "open": L.6058 x W.4284 x H.2591mm, internal volume approx. 19 m<sup>2</sup>.</p> <p>o) Set-up time with 2 workers approx. 30 minutes with trained personnel.</p> | <p>1. 230V-50Hz power supply from an external network or generator, with earthing (earth spike).</p> <p>2. Electric panel and external controls with protection according to the regulations in force plus battery pack for at least 1 kW/h.</p> <p>3. Indoor and outdoor LED lighting system, sockets distributed both at the workstations and for predisposed devices.</p> <p>4. Installed system for deriving and distributing network data</p> <p>5. External water connection and internal pipe distribution, external connections for shower and toilet drains, equipped with external collection tank booster pumps (depending on the recipient's preference).</p> <p>6. Module assembly with the following accessories (can be defined on request):<br/><b>Common Area:</b></p> <ul style="list-style-type: none"> <li>➢ 1 tall cupboard with 6 Euro boxes and additional shelves</li> <li>➢ 1 fixed work table with substructure refrigerator 50L, coffee machine, kettle, microwave and drawers</li> <li>➢ 1 free-standing folding table 1600x800 mm with 6 stacking chairs</li> <li>➢ 2 wall-folding tables and 2 stacking chairs</li> <li>➢ 1 whiteboard with 2 vertical sliding boards plus standard whiteboards</li> <li>➢ 1 wall air conditioner summer/winter incl. remote control</li> <li>➢ 1 CO<sup>2</sup> fire extinguisher</li> </ul> <p><b>Sanitary-Area</b></p> <ul style="list-style-type: none"> <li>➢ 1 side access to the black area with ejection chute for dirty laundry, washing facility (possibly shower) and white area for changing room with separate side exit opposite; Sink, water heater, accessories, closet for clean clothes, heater, fan, black and white area transparent dividing curtain, drain shaft.</li> <li>➢ 2 toilets with washbasins and accessories (fans, mirrors, etc.) one on each side</li> <li>➢ 2 dismantlable awnings to cover the side entrances for the above areas.</li> </ul> <p><b>Equipment Room</b></p> <ul style="list-style-type: none"> <li>➢ Removable 13 KVA silenced generator with battery charge retention</li> <li>➢ Kit waste water pump, plumbing, piping to wall sockets in/out</li> <li>➢ Cable reel, flexible hose set and other accessories</li> </ul> <p>7. Additional accessories or equipment can be discussed or be requested</p> |
|---|---|

**Price ex works Gruaro (VE), Italy**

1. MOD. CON20A-2GV-PFBG-PCDB-21-1 (complete with the a.m. equipment):

€ \_\_\_\_\_ netto (excl. VAT)

Transport vehicle not included. Roll-off underframe for swap body vehicle with hook system acc. to the standard DIN 30722

€ \_\_\_\_\_ netto (excl. VAT)

