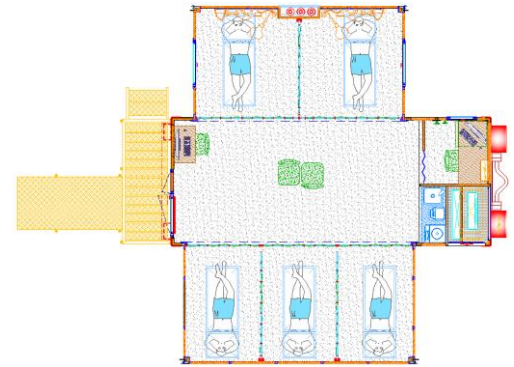
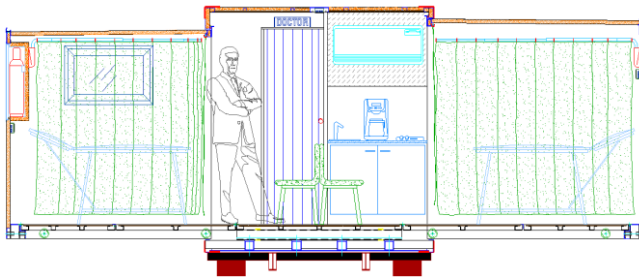


# MOBILE INFIRMARY ON CONTAINER ISO-20" 2-SIDE EXPANDABLE

DIVISION FIELDLOGISTICS | DATA SHEET 21.12 | MOD. CON20AL-2GV-INF/2



## TECHNICAL CHARACTERISTICS:

- Dimensions according to ISO 20-1CX suitable for vehicles for container transportation.
  - Robust support structure made of steel, coated with aluminum panels (inside and outside) and side structure made entirely of extruded and shaped aluminum profiles (alloy 6062).
  - Three areas in the front:
    - One compartment for auxiliary equipment and power generator, which is accessible from outside
    - One area accessible from inside (above the equipment compartment) equipped with air conditioning, kitchenette, fitted wardrobes and accessories.
    - Another area accessible from inside, fully equipped as an office for the responsible doctor, separated by a folding door.
  - The two side elements, each with a length of about 4m, are extendable. Each side extension consists of a self-supporting body, and achieves a threefold interior volume in the entire area. These extendable side elements are supported by telescopic sliding guides and are fully expandable with simple manual maneuvering.
  - Synthetic flooring (rubber or vinyl) glued on water repellent multi-layer panel.
  - Wall panel consisting of sandwich panels, made outside with 1mm thick, painted aluminum sheet and inside with a 40mm thick polyurethane insulation.
  - Access for operators in the forehead area, with external entrance platform. For stretchers, it is equipped with a ramp that can be hooked on the platform.
  - Door and window frame made of aluminum profiles and polycarbonate glazing (or safety glass) including blackout blinds and anti-panic bar on the entrance door.
  - Lifting of the module by crane via ISO corner blocks or rolled-off by a below screwed subframe.
  - Customized exterior painting according to RAL color catalogue upon request and labelling.
  - Dimensions in mm and weight:
    - closed 6058 x 2438 x 2591mm (ISO 20'-1CC) - opened 6058 x 3748 x h. 2591mm.
    - Total weight approx. 6,3 tons + rolling subframe acc. DIN 30722 for changeable loader approx. 1 t.
- 380V power supply from external power via CEE socket.
  - Electric control cabinet with external switches divided into:
    - Electric control cabinet for external discharges and safety devices in accordance with applicable regulations
    - Electric control cabinet with 2KWx1H UPS battery kit
    - Electric switchboard for external lighting.
    - Power distribution for 230V internal and low voltage electrical outlets throughout the module and the equipped rooms. Internal and external illumination with LEDs.
  - Earthing system with connections and associated rods
  - Medical oxygen system with external compartment for storage of oxygen cylinders and distribution system with special regulation and control accessories.
  - Equipment of the module:
    - Technical room: to storage loose accessories and 13KVA power generator mounted on trolley and a foldable ramp.
    - Kitchen area: sink, coffee machine, induction cooker and standard accessories.
    - Treatment zone: oxygen distribution in two areas. Equipped wall-strips, privacy screens, sliding curtains on removable ceiling rails for subdivision of slightly injured right, severely injured left, central reception and waiting area.
    - Office area equipped with: folding door, work desk, 40L refrigerator, chair and cabinet for medication or technical-medical material.
  - Hydraulic system, electric boiler, external water connection, with external drain.
  - Access with stretcher over ramp, wide door opening with 2 leaves.
  - Air conditioning with approx. 5kW summer/winter incl. remote control and external condenser in the protected compartment outside.
  - Implementable equipment of special medical accessories available on request or directly installable by the user himself.